

5. Configuration using a telnet

1) Telnet to the Super Series using the factory default IP address.
telnet 192.168.161.5

2) Follow the same procedure as **2. Configuration using a console**, in the log-in, the parameter configuration and the port test, since the user interface of the Telnet is identical to that of the console.

6. Configuration using a web browser

The Super Series provides easy-to-use web interface for the configuration and the port access.

1) Open a web browser such as Internet Explorer or Netscape Navigator and enter the IP address of the Super Series in the url.
The log-in page will be shown as follows.



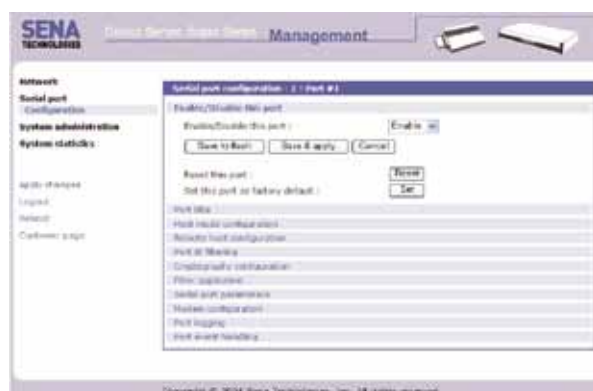
2) Enter the **admin:admin** as a User ID and a password, and then click the [Login] button.
3) The Super Series configuration page will be shown with left-hand menu bar and the workspace on the right.



4) Select the menu, **[Network -- IP Configuration]** to perform the IP Configuration.

After completing the configuration, click **[Save & apply]** button on the workspace to reflect the updated setting to the system. Refer to 3.1. *IP Configuration* in the Users' Guide for detailed information.

5) Select the menu, **[Serial port -- Configuration]**, to configure the parameters of Port #1. After completing the configuration, click **[Save & apply]** button on the workspace to reflect the updated setting to the system. Refer to 4.1. *Individual Port Configuration* in the Users' Guide for details.



SENA



SENA

U.S. / Canada / South America
Tel : +1 (408) 448-1997 Fax: +1 (408) 907-3738
Toll Free (US/Canada): 8668-US-SENA (866-887-7362)

EU / Africa
Tel : +33(0) 1 53 53 16 29 Fax : +33(0) 1 70 24 70 90

Asia / Pacific
Tel : +82-2-576-7362 Fax : +82-2-573-7710

Contact us via E-mail
General Information: info@sena.com
Sales&Distribution: sales@sena.com
Technical Support : support@sena.com

HelloDevice Super series SS100



Quick Start Guide

1. Connection

1) Hook up the power to the Super Series.

2) Hook up the Console/Ethernet cable to the Ethernet connector of the Super Series with your hub or switch.

3) Confirm that the **Power, Ready** and **Link** LEDs are light up.

4) Hook up the Console/Ethernet cable with RJ45-DB9F adapter into the console port of the Super Series.

5) Connect the other end of the Console/Ethernet cable with RJ45-DB9F adapter to the PC's COM port.

Note: To connect the SS100, do not plug the adapter. The console cable is used as it is. Keep in mind to slide Data/Console switch to the **Console** side when you are using the SS100.

Refer to *Appendix A. Connections* in the Users' Guide for detailed information.

2. Configuration using a console

1) Run a terminal emulation program such as HyperTerminal and set up the serial configuration parameters as follows:

Baud rate = 9600, Data bits = 8, Parity = None, Stop bits = 1, Flow control = None

2) Press **ENTER** key at the terminal emulation program.

3) Enter the user name and password. Factory default setting of the user name and password are **admin:admin**.

4) Users can change the default configuration of the IP address and the serial port(s) by using the text menu interface for their environment.

HelloDevice™

HelloDevice™

```
SS100_Device login: admin
Password:

-----
Welcome to SS-100 configuration page
Current time: 07/01/2004 00:00:34 F/W REV.: v1.4.4
Serial No.: SS1000207-00007 MAC address: 00-01-95-04-17-06
IP mode: Static IP IP address: 192.168.161.5
-----

Select menu:
1. Network configuration
2. Serial port configuration
3. System administration
4. Save changes
5. Exit without saving
6. Exit and apply changes
7. Exit and reboot
<Enter> Refresh
-->
```

3. Assign IP address

Factory default IP mode setting of the Super Series is **Static**, and the default IP address is 192.168.161.5.

1) Select menu **1. Network configuration** at the main menu.

```
-----
Network configuration
-----

Select menu:
1. IP configuration
2. SNMP configuration
3. Dynamic DNS configuration
4. SMTP configuration
5. IP filtering configuration
6. SYSLOG configuration
7. NFS configuration
8. Web server configuration
9. Ethernet configuration
10. TCP service configuration
<ESC> Back, <Enter> Refresh
-->
```

2) Select submenu **1. IP configuration** at the **Network configuration** menu.

```
-----
Network configuration --> IP configuration
-----

Select menu:
1. IP mode: Static IP
2. IP address: 192.168.161.5
3. Subnet mask: 255.255.0.0
4. Default gateway: 192.168.1.1
5. Primary DNS: 168.126.63.1
6. Secondary DNS: 168.126.63.2
<ESC> Back, <Enter> Refresh
-->
```

3) Change the parameters according to your network environment, i.e. **IP address, Subnet mask, Default gateway, DNS server**.

4) Return to the main menu by press **ESC** key.

5) Select the menu **6. Exit and apply changes** to save and apply the configuration changes.

4. Serial port(s) configuration

1) Select the menu **2, Serial port configuration** at the main menu.

```
-----
Serial port configuration
-----

Port# Title Mode Local-Port Serial-Settings
1. Port #1 TCP 7001 RS232-9600-N-8-1-None

Enter port number to configure
-->
```

2) Select a **Port number** to configure at the **Serial port configuration**.

3) Select the submenu **3. Host mode configuration**, and set up the host mode parameters according to your application.

4) Select the submenu **5. Serial port parameters**, and set up the parameters as same as those of your serial device.

5) Return to the main menu by press **ESC** key.

6) Select the menu **6. Exit and apply changes** to save and apply the configuration changes.

```
-----
Serial port configuration - Port #1
-----

Select menu:
1. Enable/Disable this port: Enabled
2. Port title: Port #1
3. Host mode configuration
4. Filter application
5. Serial port parameters
6. Modem configuration
7. Port logging configuration
8. Port event handling configuration
<ESC> Back, <Enter> Refresh
-->
```

Quick Start Guide

HelloDevice™

HelloDevice™

HelloDevice™