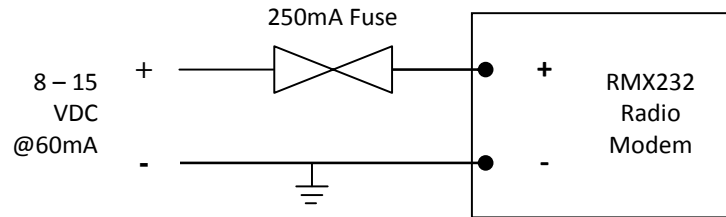


## RMX232 Radio Modem: Quick Installation Guide

**Power Supply : 9 to 15VDC @ 60mA (Newer units are 9 to 28VDC)**



**DC Jack Connection : Center pin is positive**



**Serial Interface Connections DB9**

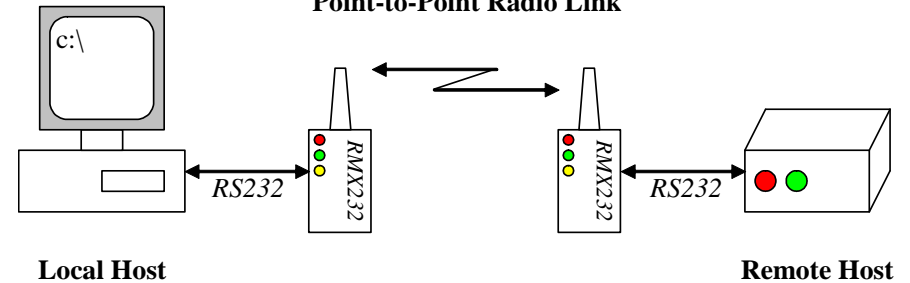
Pin	Name	DCE Function
2	RXD	Receive Data (out)
3	TXD	Transmit Data (in)
4	DTR	Data Terminal Ready (in)
5	SG	Signal Ground
7	RTS	Ready To Send (in)
8	CTS	Clear To Send (out)

**Please note:** printed user manuals are not provided with this equipment. Please visit [www.embeddedcomms.com](http://www.embeddedcomms.com) to download the latest manual.

**Enclosures:** The RMX232 Radio Modem is supplied in an extruded aluminium enclosure with mounting flanges. If the radio modem is to be used outdoors it should be mounted in a suitable IP rated enclosure to protect it from harsh external elements, dust and moisture.

**Defaults : Serial 9600bps, 8n1. Point-to-point. Unit# 0, Site# 0**

**Point-to-Point Radio Link**



©Embedded Communications Systems Pty Ltd 2012. Rev. 1.0

**Antenna Installation : External dipole antenna**

