

# **Bluetooth USB Adapter**

**Parani-UD100**

**User Guide**

**Version 3.0.0**

## **Parani-UD100 User Guide**

Document Version 3.0.0

Firmware version 3.0.X

Printed in Korea

### **Copyright**

Copyright 2011~2013, Sena Technologies, Inc. All rights reserved.

Sena Technologies reserves the right to make changes and improvements to its product without providing notice.

### **Trademark**

Parani™ is a trademark of Sena Technologies, Inc.

Windows® is a registered trademark of Microsoft Corporation.

Ethernet® is a registered trademark of XEROX Corporation.

### **Notice to Users**

When a system failure may cause serious consequences, protecting life and property against such consequences with a backup system or safety device is essential. The user agrees that protection against consequences resulting from system failure is the user's responsibility.

This device is not approved for life-support or medical systems.

Changes or modifications to this device not explicitly approved by Sena Technologies will void the user's authority to operate this device.

### **Precautions and Safety**

Do not drop or subject the device to impact. Damage to your products may result from improper use.

Keep away from harsh environments including humid, dusty, and smoky areas. Damage to your products may result from improper use.

Do not use excessive force on the buttons or attempt to disassemble the device. Damage to your products may result from improper use.

Do not place heavy objects on the product. Damage to your products may result from improper use.

# Contents

<b>1. Introduction</b>	<b>4</b>
1.1. Overview .....	4
1.2. Package Check List.....	4
1.3. Product Specification.....	5
<b>2. Installing the Bluetooth Software</b>	<b>6</b>
<b>3. Using the Bluetooth Adapter</b>	<b>10</b>
3.1. Starting Bluetooth Adapter .....	10
3.2. Searching for Bluetooth Devices .....	11
3.3. Using Bluetooth Serial Port.....	12
3.4. Using Dial-up Network (DUN).....	15
3.5. Using Bluetooth Stereo Headset .....	19
3.6. Using Other Bluetooth Services .....	22
<b>Appendix A. Mechanical Drawing</b>	<b>23</b>
<b>Appendix B. Warranty</b>	<b>24</b>
B.1. GENERAL WARRANTY POLICY .....	24
B.2. LIMITATION OF LIABILITY .....	24
B.3. HARDWARE PRODUCT WARRANTY DETAILS .....	24
B.4. SOFTWARE PRODUCT WARRANTY DETAILS.....	25
B.5. THIRD-PARTY SOFTWARE PRODUCT WARRANTY DETAILS.....	25
<b>Appendix C. Contact Information</b>	<b>26</b>

# 1. Introduction

## 1.1. Overview

Thank you for purchasing Parani-UD100. Parani-UD100 is a Bluetooth-USB adapter with replaceable external antenna. Parani-UD100 supports Bluetooth 4.0+EDR class 1 with working distance up to 300 meters. In addition, working distance can be further extended using optional dipole or patch antennas. Parani-UD100 supports USB 2.0 for the computer interface and can be used with Windows using Bluetooth stack driver included in the CD or MAC OS X using MAC OS X Bluetooth stack driver.

## 1.2. Package Check List

- Parani-UD100
- Stub Antenna
- Quick Start Guide
- CD-ROM including Windows Bluetooth driver, User Guide and Data sheet

### 1.3. Product Specification

Standards	Bluetooth 4.0+EDR Class 1 USB 2.0
Max Transfer Rate	3 Mbps (EDR)
Frequency Range	2.402 ~ 2.480GHz
Transmit Output Power	+19dBm (+6dBm EDR) E.I.R.P
Receive Sensitivity	Basic 1Mbps: -90 dBm EDR 2Mbps: -88 dBm EDR 3Mbps: -86 dBm
Antenna Connector	RP-SMA
Antenna Gain	Default Stub Antenna: 1 dBi Optional Dipole Antennas: 3 dBi & 5 dBi Optional Patch Antenna: 9 dBi
Working Distance (In Open Field)	Stub antenna – Stub antenna: 300 m Dipole (3 dBi) – Dipole (3 dBi) : 400 m Dipole (5 dBi) – Dipole (5 dBi): 600 m Patch antenna – Patch antenna: 1 km * working distance can vary depending on install environment
Bluetooth Stack Software	BlueSoleil
Bluetooth Profiles	DUN, FAX, SPP, HID, FTP, OPP, A2DP, AVRCP, HSP, HFP, PAN, BPP
Computer OS Support	Windows XP/Vista/7/8 (32/64bit) Linux (3rd party driver required) MAC OS X (MAC OS X driver required)
Size	72(L) x 22(W) x 10(H) mm
Operating Temperature	-20 ~ +70 °C
Storage Temperature	-40 ~ +85 °C
Humidity	90% Non-condensing
Regulatory Approvals	FCC, CE, TELEC, KCC, Bluetooth SIG
Warranty	1 year limited warranty



Note \*:

Bluetooth v4.0 supports improved AFH function. AFH function is to mitigate the interference between WiFi and Bluetooth radios by automatically avoiding the active WiFi channel from Bluetooth link. However, AFH does not provide a complete solution making WiFi and Bluetooth work together in harmony. It is highly recommended for users to test their wireless system enough before deployment since the overall system performance is affected by various environmental factors such as distance between them.

## 2. Installing the Bluetooth Software

This chapter describes how to install and set up the Bluetooth software on your computer.

**Before connecting the Parani-UD100, you must install the Bluetooth software. You should also uninstall any kind of Bluetooth driver or utility already installed on your computer such as Widcomm BTW or Toshiba, if any.**

- a. Insert the installation software CD.
- b. Click on “Install Bluetooth Utility / Driver”
- c. The Choose Setup Language dialog box appears. Select a language and click the OK button. (Figure 2.1)
- d. The InstallShield wizard is started. Click the Next button. (Figure 2.2)

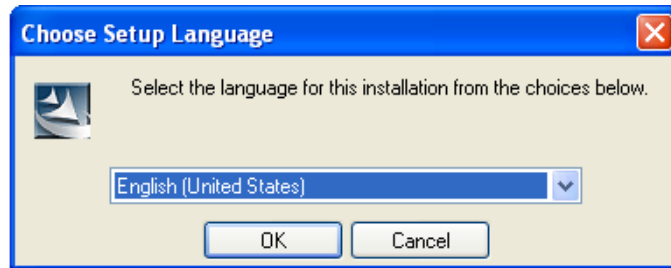


Figure 2.1: Select the language



Figure 2.2: InstallShield wizard

- e. Read the License and click the “I accept the terms in the license agreement” radio button. Then click the Next button. (Figure 2.3)
- f. Click the Next button. If you want to change the destination folder, click Browse and select the destination folder of your choice. (Figure 2.4)



Figure 2.3: License Agreement

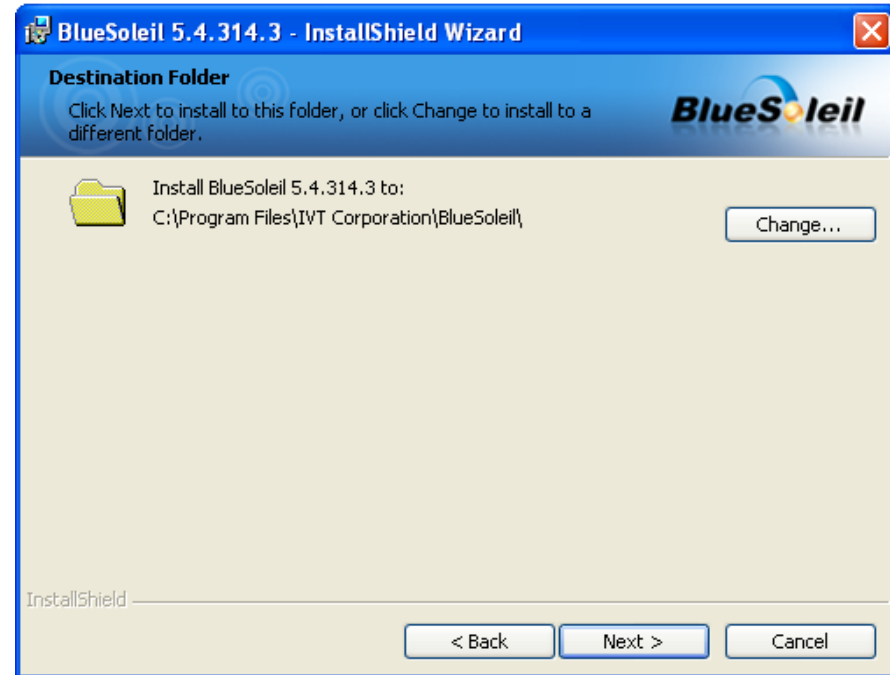


Figure 2.4: Destination folder

- g. Click the Install button to begin the installation. (Figure 2.5)
- h. Installation is completed. Click the Finish button. (Figure 2.6)

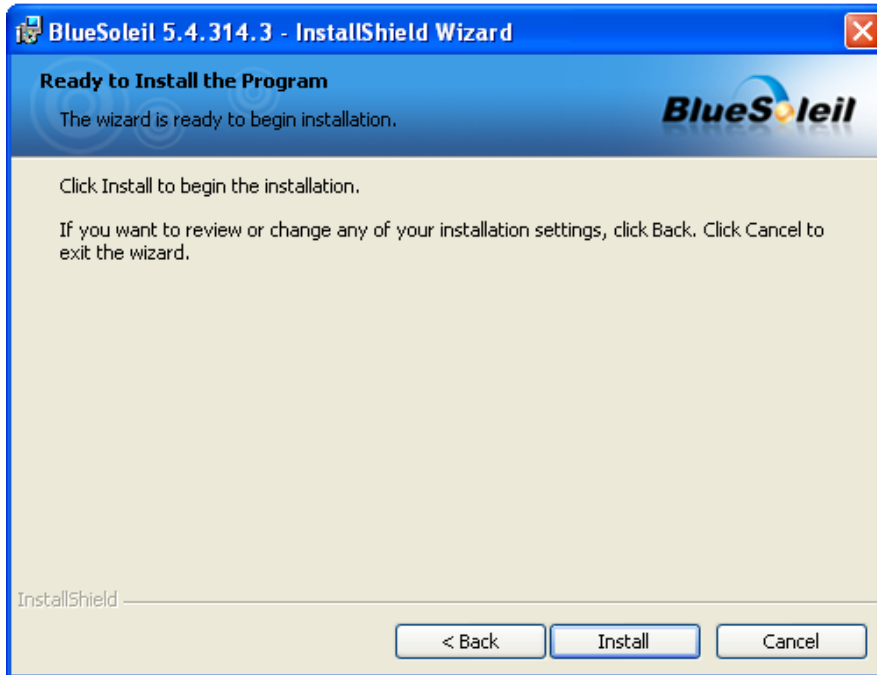


Figure 2.5: Ready to install

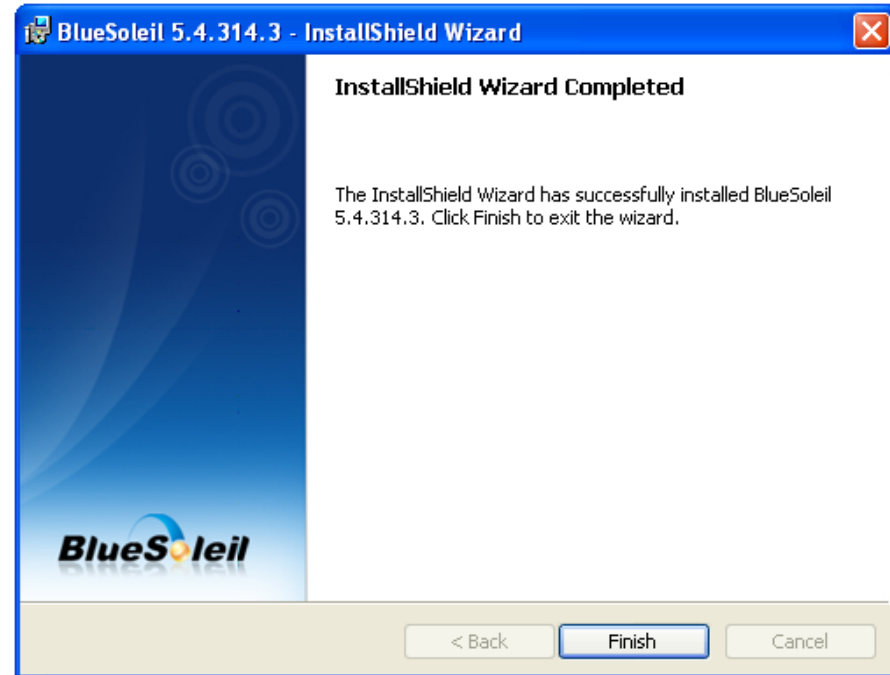


Figure 2.6: InstallShield wizard complete



- i. Click the Yes button to restart your PC.

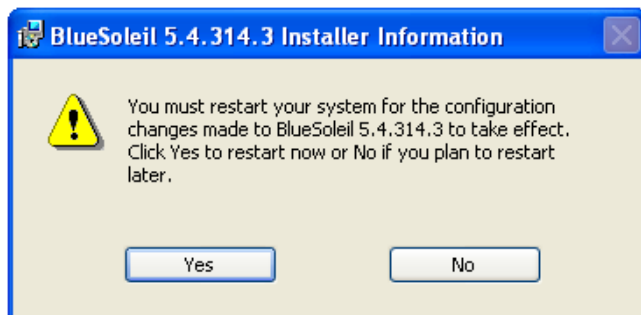


Figure 2.7: restart your PC



**Note \***: Latest BlueSoleil Device Driver  
<http://www.bluesoleil.com/products/S0001201008080001.html>

### 3. Using the Bluetooth Adapter

This chapter describes how you can use Parani-UD100 to make use of SPP, DUN, stereo headset and other Bluetooth services.

#### 3.1. Starting Bluetooth Adapter

- a. Plug in the Parani-UD100 to USB port.
- b. Right-click on the Bluetooth icon on the tray, and then click on “Turn on Bluetooth” (Figure 3.1).

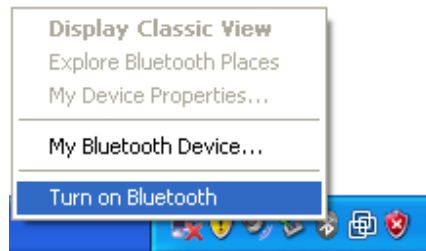


Figure 3.1: Turn on Bluetooth

### 3.2. Searching for Bluetooth Devices

To establish a Bluetooth connection, you need to find the Bluetooth devices first.

- a. Make the remote device discoverable.
- b. Double-click on the Bluetooth icon on the tray, then BlueSoleil window pops up. (Figure 3.2).
- c. Double-click on the My Device icon, namely, the orange ball in the center of the window.
- d. Bluetooth devices will appear in the window after a while. (Figure 3.3)



Figure 3.2: BlueSoleil Window



Figure 3.3: Search Devices

### 3.3. Using Bluetooth Serial Port

This section describes how to use the Bluetooth serial port. The Bluetooth Serial Port (SPP) provides a virtual serial port via Bluetooth. Any program that uses a standard serial port can use the Bluetooth serial port. A Bluetooth passkey (PIN code) is required for to connect to. Please confirm your Bluetooth PIN code.

- a. To search for your device, double-click on the My Device icon, namely, the orange ball in the center of the window. (Figure 3.4)
- b. Click and right-click on your device icon, and then click on "Search Services" (Figure 3.5)



Figure 3.4: Search for the device



Figure 3.5: Search Services

- c. Right-click on your device icon, and then click on “Connect Bluetooth Serial Port” (Figure 3.6)
- d. The connection is established successfully. You can use Bluetooth Serial Port. (Figure 3.7)



Figure 3.6: Connect Bluetooth Serial Port



Figure 3.7: Complete the Connection

e. To disconnect the connection, right-click on your device icon. And then click “Disconnect Bluetooth Serial Port” (Figure 3.8)

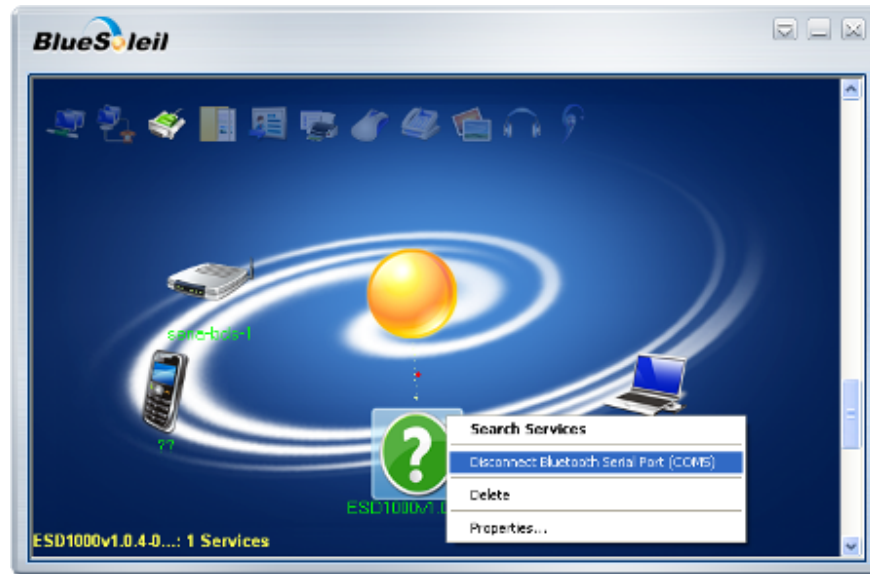


Figure 3.8: Disconnect the Connection

### 3.4. Using Dial-up Network (DUN)

This section describes how to connect to the Internet using a mobile telephone. You need to have already signed up with a provider and obtained a connection ID and password. Please ensure you have confirmed the ID, password and telephone number of your provider's access point before you begin the set-up process. A Bluetooth passkey (PIN code) is required for to connect to. Please make a note of your Bluetooth passkey.

- a. To search for your device, double-click on the My Device icon, namely, the orange ball in the center of the window. (Figure 3.9)
- b. Click and right-click on your device icon, and then click on "Search Services" (Figure 3.10)



Figure 3.9: Search for the device



Figure 3.10: Search Services

- c. Right-click on your device icon, and then click on “Connect Bluetooth Dial-Up Networking” (Figure 3.11)
- d. Type the Bluetooth Passkey (PIN Code). And then click the “OK” button (Figure 3.12)



Figure 3.11: Connect Dial-Up Networking

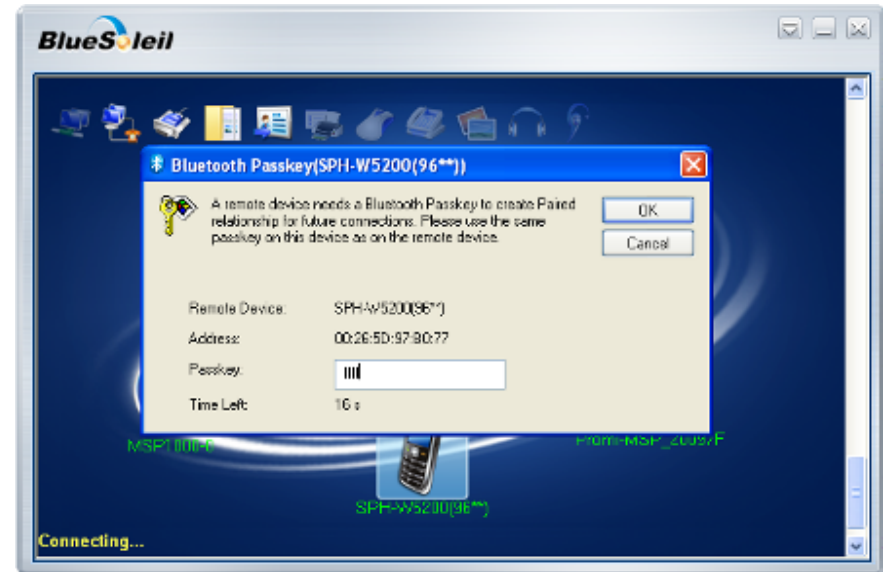


Figure 3.12: Type the PIN Code



- e. Click the Dial-up Connection icon on your taskbar then pop up the window. (Figure 3.13)
- f. Type your ID and password according to the arrangement with your provider. And then click the “Dial” button. (Figure 3.14)



Figure 3.13: Dial-Up Connection icon

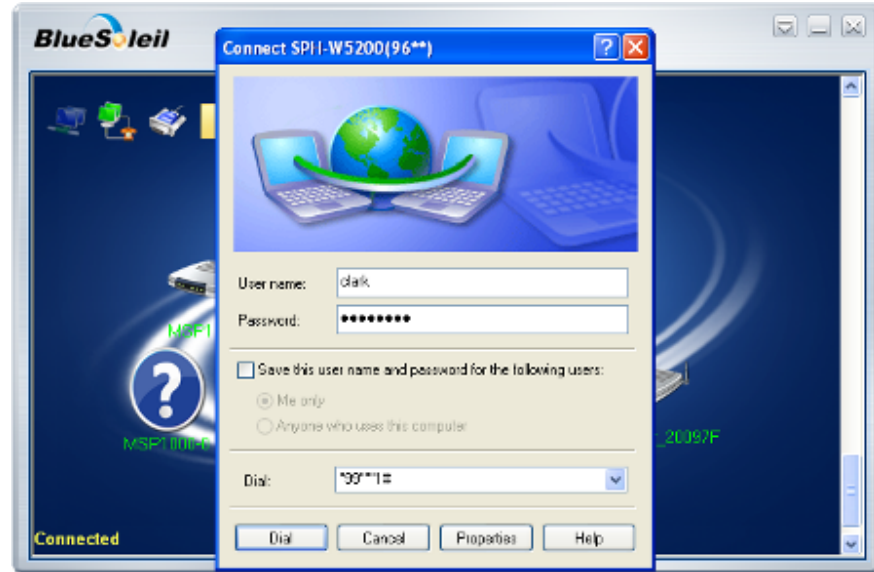


Figure 3.14: Type your ID and Password

- g. The connection is established successfully. You can use Bluetooth Dial-Up network. (Figure 3.15)
- h. To disconnect the connection, right-click on your device icon. And then click "Disconnect Bluetooth Dial-Up Networking".(Figure 3.16)



Figure 3.15: Dial-Up Connection

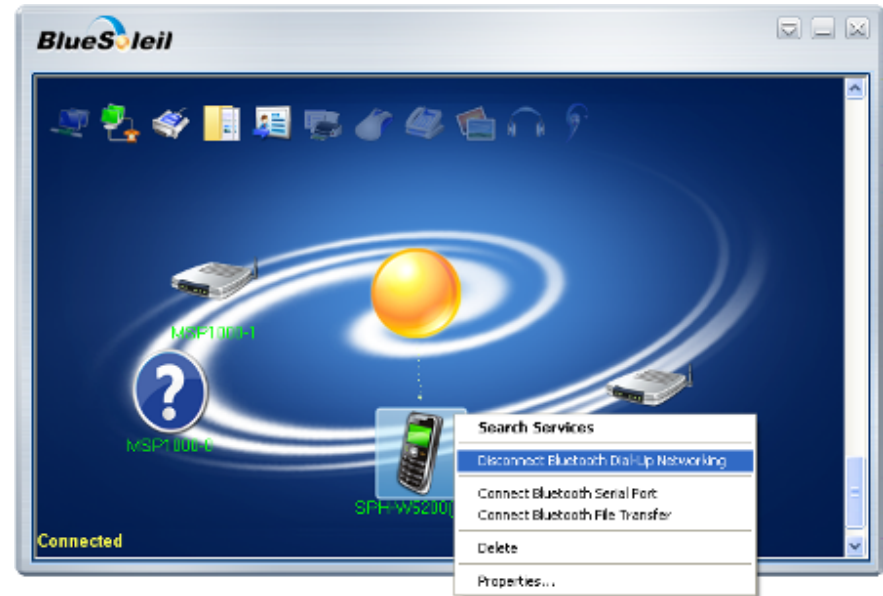


Figure 3.16: Disconnect Dial-Up Connection

### 3.5. Using Bluetooth Stereo Headset

This section describes how to use the Bluetooth stereo headset to listen to your stereo music. A Bluetooth passkey (PIN code) is required for to connect to. Please confirm your headset PIN code.

- a. To search for your device, double-click on the My Device icon, namely, the orange ball in the center of the window. (Figure 3.17)
- b. Turn your headset on and activate "Discoverable" mode.
- c. Click and right-click on your device, and then click on "Search Services" (Figure 3.18)



Figure 3.17: Search for the device



Figure 3.18: Search Services

- d. Right-click on your device icon, and then click on “Connect Bluetooth Advanced Audio” (Figure 3.19)
- e. If you are connecting to the stereo headset for the first time, type the Bluetooth Passkey (PIN Code). And then click the “OK” button (Figure 3.20)

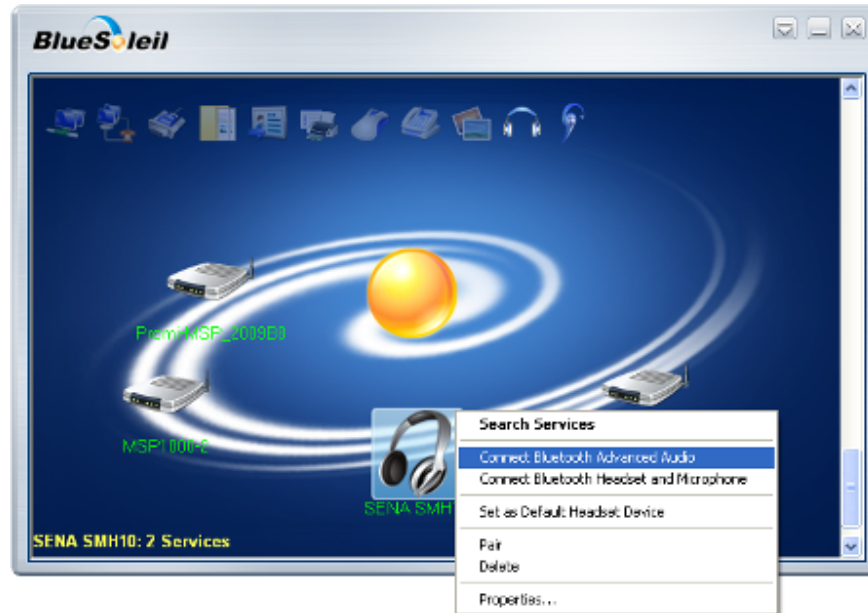


Figure 3.19: Connect Advanced Audio

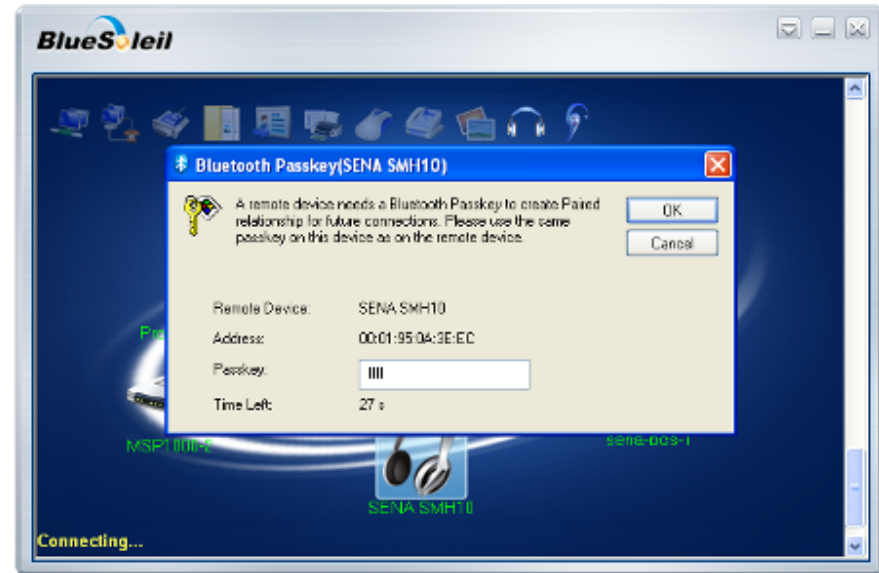


Figure 3.20: Type the Passkey

- f. The connection is established successfully. You can listen to your stereo music. (Figure 3.21)
- g. To disconnect the connection, right-click on your device icon. And then click “Disconnect Bluetooth Advanced Audio”.(Figure 3.22)



Figure 3.21: Bluetooth Stereo Headset Connection



Figure 3.22: Disconnection Bluetooth Advanced Audio

### 3.6. Using Other Bluetooth Services

For more information on other Bluetooth services, please refer to the online Help provided by the Bluetooth Manager software. To open the Bluetooth Manager Help, Double click "Bluetooth Places" icon on the desktop, and then click the Show Menu button-> Help -> BlueSoleil Online Help (Figure 3.23).

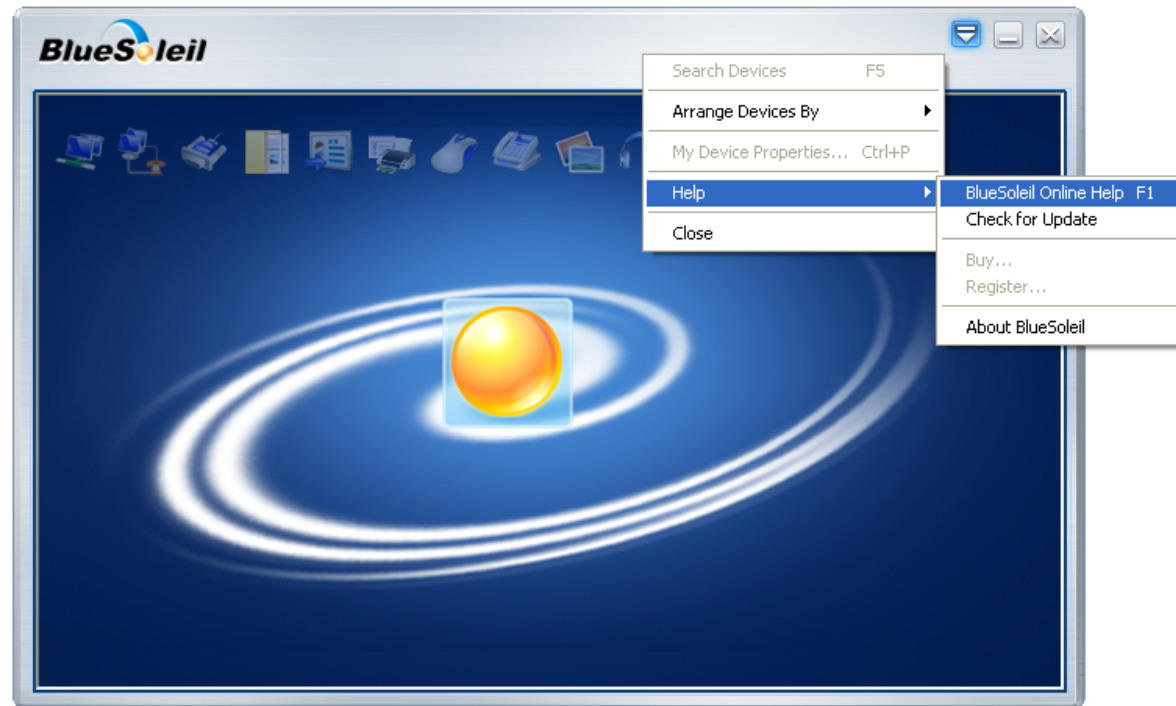
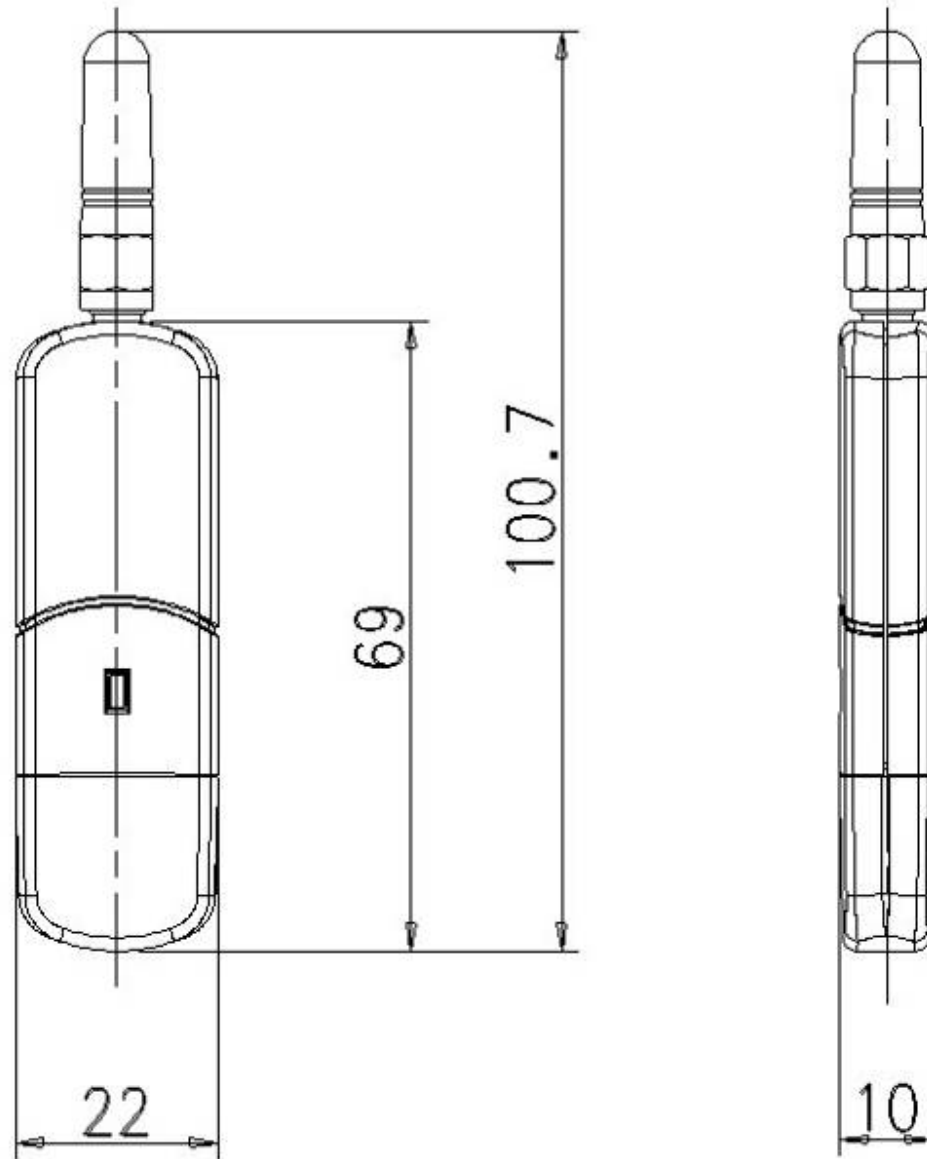


Figure 3.23: Getting Online Help

# Appendix A. Mechanical Drawing



## **Appendix B. Warranty**

### **B.1. GENERAL WARRANTY POLICY**

Sena Technologies, Inc. (hereinafter referred to as SENA) warrants that the Product shall conform to and perform in accordance with published technical specifications and the accompanying written materials, and shall be free of defects in materials and workmanship, for the period of time herein indicated, such warranty period commencing upon receipt of the Product.

This warranty is limited to the repair and/or replacement, at SENA's discretion, of defective or non-conforming Product, and SENA shall not be responsible for the failure of the Product to perform specified functions, or any other non-conformance caused by or attributable to: (a) any misapplication or misuse of the Product; (b) failure of Customer to adhere to any of SENA's specifications or instructions; (c) neglect of, abuse of, or accident to, the Product; or (d) any associated or complementary equipment or software not furnished by SENA.

Limited warranty service may be obtained by delivering the Product to SENA or to the international distributor it was purchased through and providing proof of purchase or receipt date. Customer agrees to insure the Product or assume the risk of loss or damage in transit, to prepay shipping charges to SENA, and to use the original shipping container or equivalent.

### **B.2. LIMITATION OF LIABILITY**

EXCEPT AS EXPRESSLY PROVIDED HEREIN, SENA MAKES NO WARRANTY OF ANY KIND, EXPRESSED OR IMPLIED, WITH RESPECT TO ANY EQUIPMENT, PARTS OR SERVICES PROVIDED PURSUANT TO THIS AGREEMENT, INCLUDING BUT NOT LIMITED TO THE IMPLIED WARRANTIES OF MERCHANTABILITY AND FITNESS FOR A PARTICULAR PURPOSE. NEITHER SENA NOR ITS DEALER SHALL BE LIABLE FOR ANY OTHER DAMAGES, INCLUDING BUT NOT LIMITED TO DIRECT, INDIRECT, INCIDENTAL, SPECIAL OR CONSEQUENTIAL DAMAGES, WHETHER IN AN ACTION IN CONTRACT OR TORT (INCLUDING NEGLIGENCE AND STRICT LIABILITY), SUCH AS, BUT NOT LIMITED TO, LOSS OF ANTICIPATED PROFITS OR BENEFITS RESULTING FROM, OR ARISING OUT OF, OR IN CONNECTION WITH THE USE OF FURNISHING OF EQUIPMENT, PARTS OR SERVICES HEREUNDER OR THE PERFORMANCE, USE OR INABILITY TO USE THE SAME, EVEN IF SENA OR ITS DEALER HAS BEEN ADVISED OF THE POSSIBILITY OF SUCH DAMAGES. IN NO EVENT WILL SENA OR ITS DEALERS TOTAL LIABILITY EXCEED THE PRICE PAID FOR THE PRODUCT.

### **B.3. HARDWARE PRODUCT WARRANTY DETAILS**

**WARRANTY PERIOD:** SENA warranties embedded hardware Product for a period of one (1) year, and external hardware Product for a period of three (3) or five (5) years according to the Product type.

**WARRANTY PROCEDURE:** Upon return of the hardware Product SENA will, at its option, repair or replace Product at no additional charge, freight prepaid, except as set forth below. Repair parts and replacement Product will be furnished on an exchange basis and will be either reconditioned or new. All replaced Product and parts become the property of SENA. If SENA determines that the Product is not under warranty, it will, at the Customers option, repair the Product using current SENA standard rates for parts and labor, and return the Product at no charge in or out of warranty.

**WARRANTY EXCLUSIONS:** Damages caused by

- Accidents, falls, objects striking the SENA product,
- Operating the Product in environments that exceed SENA's temperature and humidity specifications,



- Power fluctuations, high voltage discharges,
- Improper grounding, incorrect cabling,
- Misuse, negligence by the customer or any other third party,
- Failure to install or operate the product (s) in accordance to their SENA User Manual,
- Failure caused by improper or inadequate maintenance by the customer or any other third party,
- Floods, lightning, earthquakes,
- Water spills,
- Replacement of parts due to normal wear and tear,
- Hardware has been altered in any way,
- Product that has been exposed to repair attempts by a third party without SENA's written consent,
- Hardware hosting modified SENA Software, or non-SENA Software, unless modifications have been approved by SENA.
- Battery component capacity degradation due to usage, aging, and with some chemistry, lack of maintenance.

#### **B.4. SOFTWARE PRODUCT WARRANTY DETAILS**

WARRANTY PERIOD: SENA warranties software Product for a period of one (1) year.

WARRANTY COVERAGE: SENA warranty will be limited to providing a software bug fix or a software patch, at a reasonable time after the user notifies SENA of software non-conformance.

#### **B.5. THIRD-PARTY SOFTWARE PRODUCT WARRANTY DETAILS**

The warranty policy of the third-party software is conformed to the policy of the corresponding vendor

## Appendix C. Contact Information

If you have any questions regarding the product, please contact your local dealer/distributor or contact us directly as contact information below:

### Contact Technical Support

Web [http://www.sena.com/support/contact\\_support/](http://www.sena.com/support/contact_support/)  
Email [support@sena.com](mailto:support@sena.com)  
Phone Toll Free (US/Canada): 1-8668-US-SENA (1-866-887-7362)  
Outside from US/Canada: +1 (408) 448-1997

### Contact Sales

Web [http://www.sena.com/where\\_to\\_buy/contact\\_sales/](http://www.sena.com/where_to_buy/contact_sales/)  
Email [sales@sena.com](mailto:sales@sena.com)  
Phone Toll Free (US/Canada): 1-8668-US-SENA (1-866-887-7362)  
America: +1 (408) 448-1997  
EU/Africa: +33 (0) 1 53 53 16 29  
Asia/Pacific: +82 (2) 529-7024